



Light

SLOAN O1 LOW

SLOAN

Fashionable, comfortable and slip-resistant ESD sneaker that offers reliable protection

Sloan O1 is a no-compromise work shoe that looks and feels like a classic sneaker but offers reliable comfort and safety. This lightweight sneaker has reflective elements on its side and back and a breathable textile upper, ensuring long-lasting comfort throughout the day and night.

Upper	Lorica, Mesh
Lining	Mesh
Footbed	SJ foam footbed
Outsole	Phylon/Rubber (NBR)
Category	O1 / ESD, SRC, FO
Size range	EU 35-42 / UK 3.0-8.0 / US 5.5-10.5 JPN 21.5-26.5 / KOR 230-270
Sample weight	0.265 kg
Norms	ASTM F2892:2018 EN ISO 20347:2012



FUC

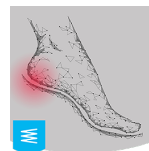


BLU



Breathable upper

Increased moisture and temperature management for extended wearer comfort.



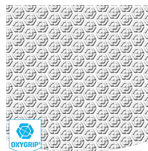
Heel energy absorption

Heel energy absorption reduces the impact of jumps or running on the body of the wearer.



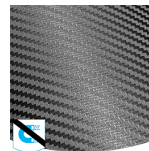
Non-marking outsole

Non-marking outsoles do not leave color marks on the ground.



Oxygrip / SJ Grip

Rubber outsoles with Oxytraction® technology provide excellent traction on both dry and wet floors and meet SRC (SRA+ SRB) standards.



Metal free

Metal free safety shoes are in general lighter than regular safety shoes. They are also very beneficial for professionals who have to pass through metal detectors several times a day.



Removable insole

Renew your insole at a regular base or use your own orthopedic insoles for a higher comfort.

Industries:

Catering, Cleaning, Food & beverages, Medical

Environments:

Dry environment, Extreme slippery surfaces

Maintenance instructions:

To extend the life of your shoes, we recommend to clean them regularly and to protect them with adequate products. Do not dry your shoes on a radiator, nor nearby a heat source.

	Description	Measure unit	Result	EN ISO 20347
Upper	Lorica, Mesh			
	Upper: permeability to water vapor	mg/cm ² /h	2.87	≥ 0.8
	Upper: water vapor coefficient	mg/cm ²	21	≥ 15
Lining	Mesh			
	Lining: permeability to water vapor	mg/cm ² /h	63	≥ 2
	Lining: water vapor coefficient	mg/cm ²	290	≥ 20
Footbed	SJ foam footbed			
	Footbed: abrasion resistance (dry/wet) (cycles)	cycles	25600/12800	25600/12800
Outsole	Phylon/Rubber (NBR)			
	Outsole abrasion resistance (volume loss)	mm ³	118	≤ 150
	Outsole slip resistance SRA: heel	friction	0.40	≥ 0.28
	Outsole slip resistance SRA: flat	friction	0.38	≥ 0.32
	Outsole slip resistance SRB: heel	friction	0.23	≥ 0.13
	Outsole slip resistance SRB: flat	friction	0.27	≥ 0.18
	Antistatic value	MegaOhm	165	0.1 - 1000
	ESD value	MegaOhm	76	0.1 - 100
	Heel energy absorption	J	34.1	≥ 20

Sample size: 38

Our shoes are constantly evolving, the technical data above may change. All product names and brand Safety Jogger, are registered and may not be used or reproduced in any format, without written consent from us.